

Invest for Excel **quick** installation manual

Four easy steps

1. Acquire the license number

You can either get the free trial license or buy full license.
Either option takes only several minutes to complete.

The license number
looks like this:

XXXXXXXXXXXXXXXX

- **For free trial license**, fill a short download form at <https://www.investforexcel.com/#download>
The 30-days free trial license (with some limitations) is generated automatically and is instantly sent to you in the confirmation email.
- or -
- **For a full license**, choose the licensing model, edition, amount of users and submit the payment at <https://www.investforexcel.com/buy>.
The new license number for your full license is generated automatically and instantly sent to you in the purchase confirmation email.

2. Download the package

The same instant **confirmation email** from first step also contains your individual Invest for Excel download link.

[Download](#)



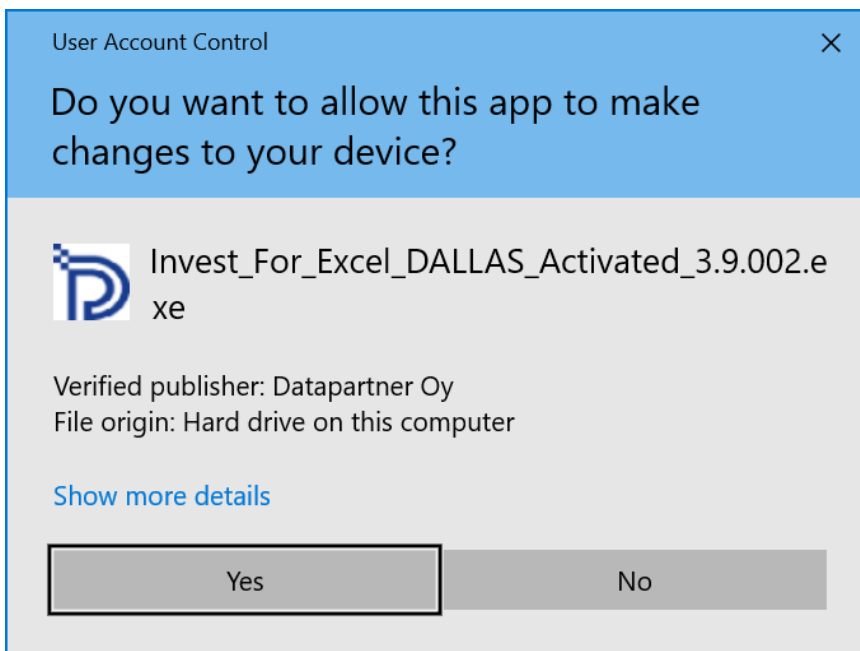
Invest_For_Excel_
DALLAS_Activate
d_3.9.002.exe

3. Install the package

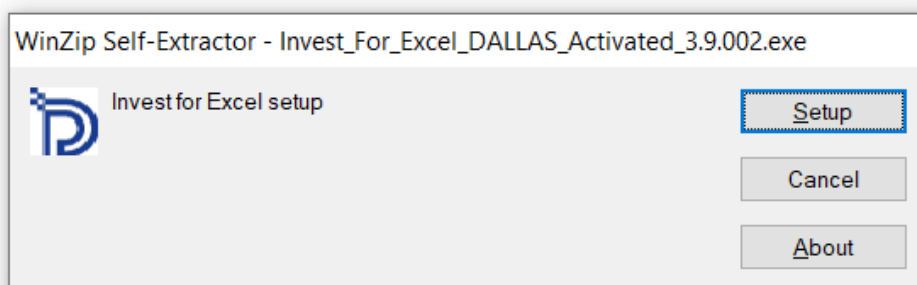
Installation is very simple and can be completed in just a few minutes.

Note: Like any other Windows installation, it requires administrator-level permission to install. If your Windows user account does not have the administrator-level permission, you will need to ask your IT administrator to approve the installation.

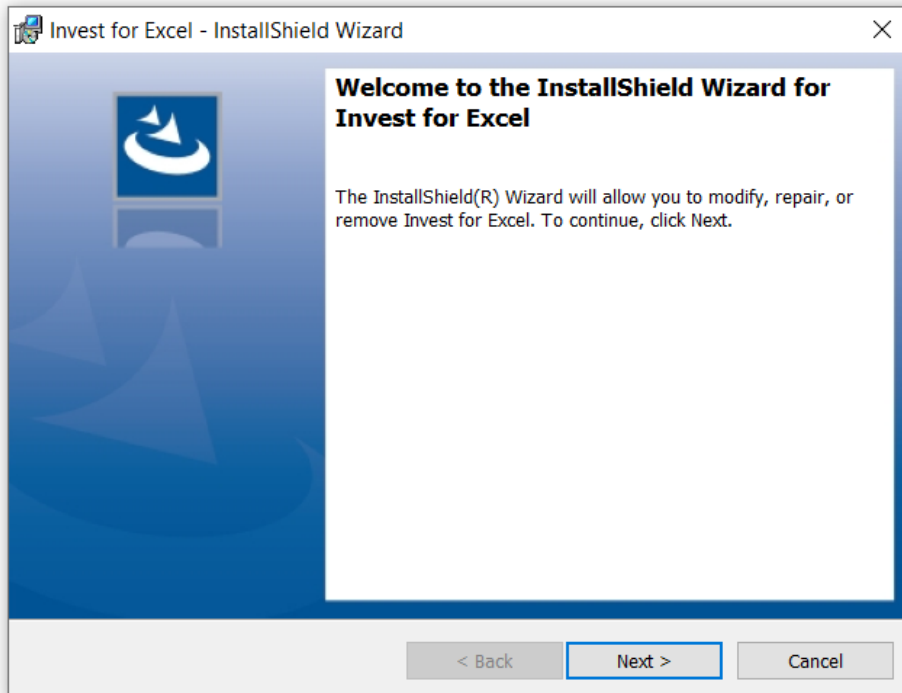
1. Run the downloaded installation package
2. Approve it (administrator-level permission required)



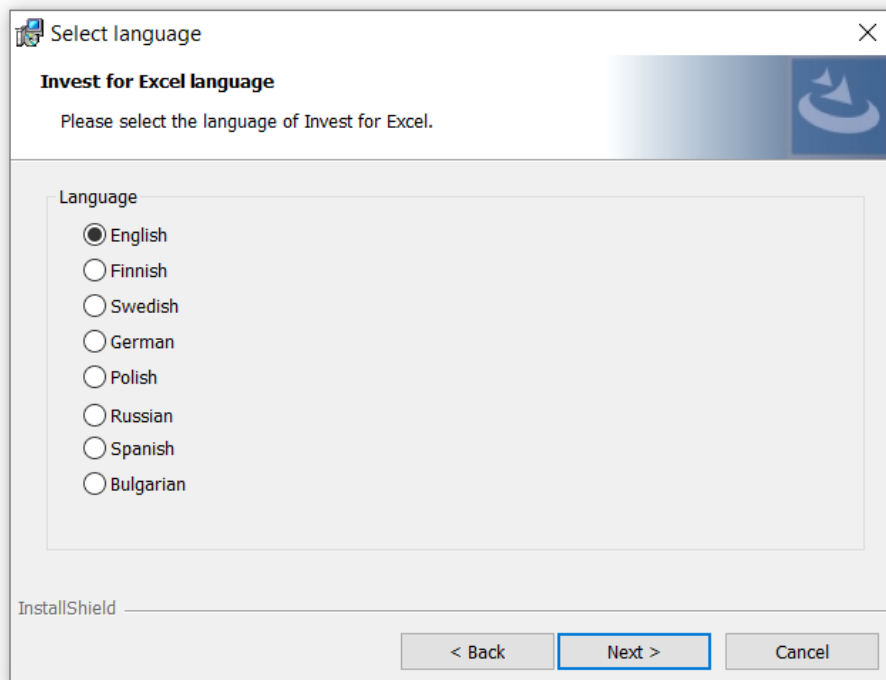
3. Press Setup



4. Press Next

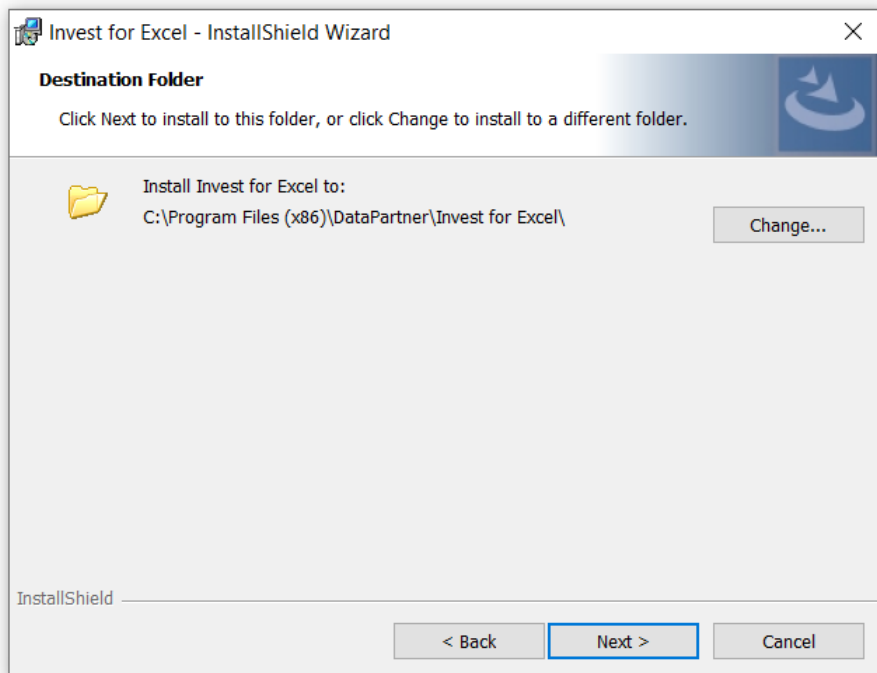


5. Choose the desired language

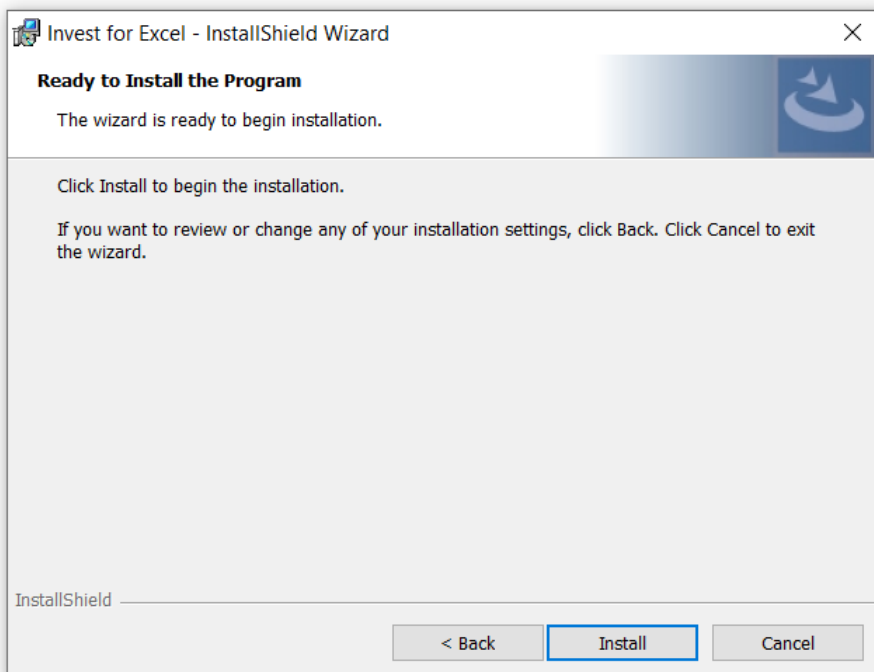


6. Choose the installation location

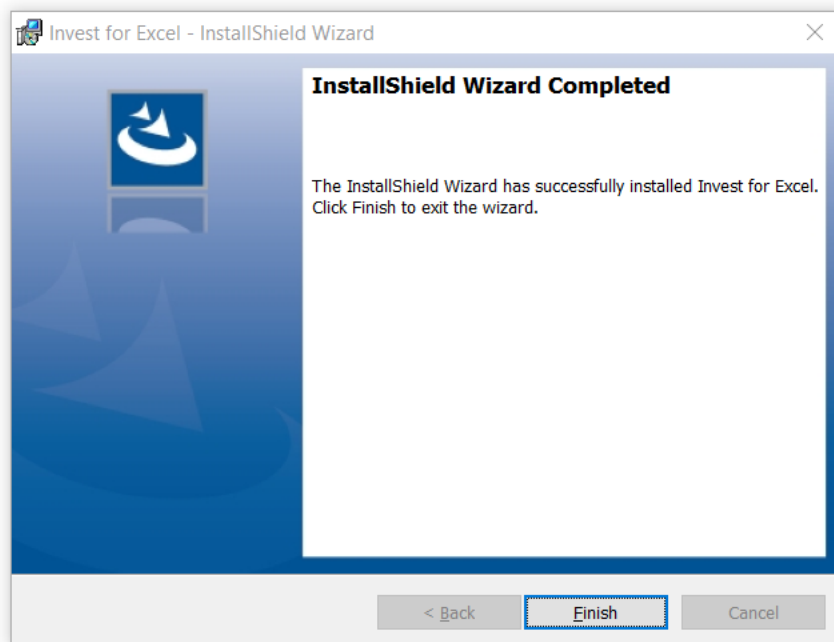
It is recommended to leave the default location that is automatically offered.



7. Press Install to proceed



8. Press Finish to complete the setup



9. The installation is complete, and you should now have the **Invest for Excel** icon on your Desktop:



4. Activate your installation

When you start Invest for Excel for the first time, an activation form is shown:

Invest for Excel Activation

DataPartner

invest
FOR EXCEL

Close

Copyright (c) 1995-2020

Activate

1. Enter License number

Note! Your license number has been sent to your email. Please, copy it to this field.

2. Activate

Note! You need to be connected to internet to activate.

If you are not currently connected to internet, you need to create a file for offline activation and send it by email.

[Offline activation](#)

www.investforexcel.com

Enter the license number that has been sent to your email. Depending on the license number, you could be asked to enter user information.

Invest for Excel Activation

DataPartner

invest
FOR EXCEL

Close

Copyright (c) 1995-2020

Activate

1. Enter License number

Note! Your license number has been sent to your email. Please, copy it to this field.

2. Enter user information:

First name

Last name

Email

Note! If you have activated before, please enter the same email address.

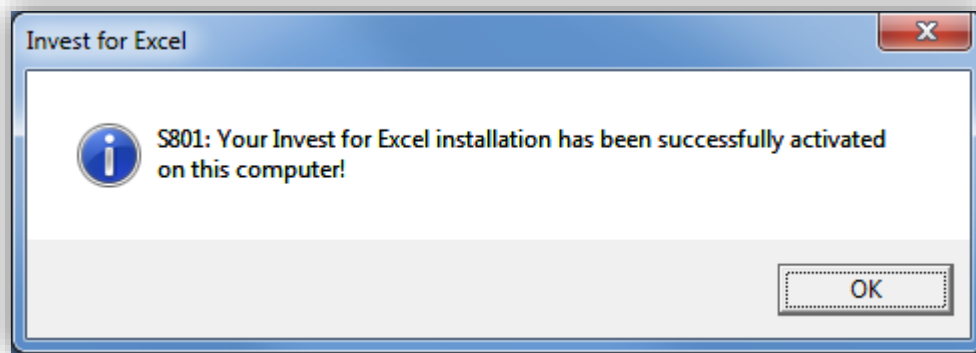
Please send me information about updates and training to my email.

3. Activate

Note! You need to be connected to internet to activate.

www.investforexcel.com

Press the Activate button to activate the license. A message is shown for successful activation or failure.



When you press ok, Invest for Excel is started. The next time you start Invest for Excel, no messages or forms are displayed upon start.



Congratulations! You are now ready to start modelling in Invest for Excel!

Have questions?

We are happy to help you in any of the steps listed above, as well as with using the Invest for Excel.

Contact DataPartner Support

- Email: support@datapartner.fi
- Phone: +358 19 54 10 100
- Online chat: <https://www.datapartner.fi/chat>